

Office for Research &amp; Graduate Education

## Research News

### Funding Opportunities

As funding opportunities are announced we will compile a full list of opportunities on our website. The web page will be updated periodically as new opportunities are discovered.

### ResultsOHIO

To support Pay for Success initiatives to help tackle the social and public health challenges facing Ohio. Through ResultsOHIO lawmakers, local officials, policymakers, and the private sector work together to engage populations who are in the greatest need of achieving better results.

**Deadline: November 20, 2020**

### Centers for Disease Control and Prevention

To develop and implement an influenza-like illness (ILI) specific student absentee monitoring system in kindergarten through twelfth grade (K-12) schools and assess its usability for early detection of influenza, SARS CoV 2, and other respiratory pathogen transmission in schools and surrounding communities.

**Deadline: December 18, 2020**

[View All Funding Opportunities](#)

## News

### Research Awards - Call for Nominations

The CFAES Office for Research and Graduate Education are requesting nominations for the 2021 Faculty Research Awards and the William E. Krauss Award for excellence in graduate education.

The CFAES Faculty Research Awards recognize CFAES and OARDC scientists who have made outstanding research contributions in the advancement of science and technologies relating to food, agriculture, family, communities and/or the environment.

The William E. Krauss Award was established through a gift from the William E. Krauss family to recognize excellence in research performed by a doctoral student. This award recognizes a Ph.D. student that has produced a peer reviewed publication of the highest quality. [Learn More](#)

### Workday Grants

Many improvements related to grants management and administration will occur as Ohio State moves to Workday effective January 2021. Faculty and some staff, along with colleagues in the Office of Research, all will use Workday to manage grants. Sign up for the following sessions in Buckeye Learn.

- Workday: The Grant Management Dashboard for Principal Investigators
- Workday: Grant Management Reporting and Analysis

[Get Registered](#)

## How To: Deposit a check received by a department or office from a sponsor

When a check, or any payment information, is received by a department or office as a payment related to sponsored projects it should be forwarded to:

The Ohio State University: Office of Sponsored Programs  
Financial Services 4th Floor  
1960 Kenny Road  
Columbus OH, 43210

Payments should be made payable to The Ohio State University and the sponsor should be instructed to send checks directly to the address above. A PDF copy of the check and the backup should be retained to ensure that the check is received by OSP Financial Services and properly applied.

## Research Administration for Departmental Staff Training Schedule Available for AY 2021

Take a moment to view the training sessions being offered in 2021 via CarmenZoom as part of the Research Administration for Departmental Staff series. You MUST register in BuckeyeLearn ([go.osu.edu/BuckeyeLearn](https://go.osu.edu/BuckeyeLearn)). Zoom links will be sent to registered attendees only.

If you require an accommodation such as live captioning or interpretation to participate in any session, please contact Karla Gengler-Nowak at [gengler-nowak.1@osu.edu](mailto:gengler-nowak.1@osu.edu) or 614-292-8077. Requests made 10 business days (two weeks) prior to the event will generally allow us to provide seamless access, but the university will make every effort to meet requests made after this date.

## Confidential Disclosure Agreement (CDA), Materials Transfer Agreement (MTA) and Dual Use Agreements (DUA)

Before transferring information, materials or data to third parties, there are agreements that often need to be executed to protect the intellectual property of both the university and other parties. The OSU Corporate Engagement Office contacts team is working remotely, providing digital assistance on CDAs, MTAs and DUAs. Please note that the team is prioritizing all contracts related to the COVID-19 pandemic. [Learn More](#)

The OSU Office of Corporate Engagement offers an online request system for CDA's, MTA's and DUA's. Submit your request now at: <https://innovate.osu.edu>.

## NSF Award Terms and Conditions Have Been Revised

All of the terms and conditions have been updated to include a new article which establishes a post-award disclosure requirement for undisclosed current support and in-kind contribution information. Each set of terms and conditions is accompanied by a summary of changes made to that document.

The revised terms and conditions will apply to all new NSF awards and funding amendments to existing NSF awards made on or after October 5, 2020, except for the SBIR/STTR-I and SBIR/STTR-II CA-FATC which will become effective July 6, 2020. [Read More](#)

## Meet our Staff - Chip Styer, Resource Planning Analyst

Chip Styer is a Resource Planning Analyst in the Office for Research and Graduate Education, specializing in data analytics and visualizations. Soon after joining OSU in 1999, Chip launched the Unified Reporting System for the college, the first online faculty-staff reporting system at OSU. It has since been supplanted by university-wide systems; OSU:Pro, then Research In View, and now Vita. Chip supports reporting and analytics in all areas of the college and is available to consult on reports and data visualizations, and on Qualtrics surveys.

[View Full Bio](#)



## Researchers Worldwide Fight to Work and Teach Amid COVID-19

Universities welcome back scholars and students — but safety restrictions make science and study awkward. [Read More](#)

## Developing an NIH Proposal?

The use of hypertext (e.g. hyperlinks and URLs) in NIH applications is restricted due to concerns including reviewer confidentiality, “overstuffing” applications, review consistency, and malware. There is no change in the NIH policy on the use of hyperlinks. This policy can be found in the NIH SF424 (R&R) Application Guide.

[View Guide](#)

## NSF System Update

The National Science Foundation (NSF) has launched the Research.gov proposal preparation demonstration site. The new demo site offers proposers the opportunity to create proposals in Research.gov with the role of a Principal Investigator (PI) prior to preparing and submitting proposals in the actual Research.gov Proposal Submission System. We invite you to try the Research.gov proposal preparation features on the new demo site. [Visit Site](#)

Questions? If you have IT system-related questions, please contact the NSF Help Desk at 1-800-381-1532 (7:00 AM - 9:00 PM ET; Monday - Friday except federal holidays) or via [rgov@nsf.gov](mailto:rgov@nsf.gov). Policy-related questions should be directed to [policy@nsf.gov](mailto:policy@nsf.gov).

## BuckeyeBox will be Retired in 2021

When your department or business unit begins to migrate, OCIO will move your files to One Drive and Teams. They will work with departmental leaders to determine the best time for the department to migrate.

- Clean up your files: Use this [Job Aid \(link is external\)](#) to help walk you through this process.
- Participate in [trainings](#) to learn how to use One Drive and Teams. OCIO will host more advanced trainings as the project progresses.
- Review the [Retention Schedules \(link is external\)](#) for your documents.
- If you have API's or unique use cases, please share them with the project team at [BoxMigrationProject@osu.edu](mailto:BoxMigrationProject@osu.edu). If you are a Managed IT Services (MITS) partner, you may also contact your relationship manager with concerns.

Explore more details at: <https://it.osu.edu/cloud-storage-and-collaboration-transition>

## Recent Awards

**Matthew Hamilton, Eric Toman – SENR, \$361,394:** Collaborative research: cognitive, social, and institutional dynamics of decision-making in complex hazard-prone environments, NSF Social & Economic Sciences

**Godwin Apaliyah – EXT, \$7,033:** Community downtown revitalization and sustainability, OH Arts Council

**Oswaldo Campanella, Fatemeh Maleky – FST, \$45,000:** Protein and kernel hardness profiles of eastern soft wheat desirable for making noodles and tortilla, USDA Agricultural Res Service

**Elizabeth Toman, Kaiguang Zhao – SENR, \$127,719:** Stream & wetland mitigation forecasting: Developing a predictive model for faster project delivery and cost-savings, OH Dept of Transportation

**Margaret Kalcic – FABE, \$249,932:** Soil health and water quality nexus in sustainable agroecosystems, University of Minnesota

**Michael Demyan, Steven Culman – SENR, \$260,805:** Better understand and measure dynamic soil properties (DSP) and develop optimized mid-infrared prediction techniques. Great Lakes-Northern Forest CESU 68-3A75-17-484, Natural Resources Conservation Service

**Sandra Allison – EXT, \$34,765:** Parent education and engagement, University Hospitals Cleveland Medical Center

**Stephen Matthews – SENR, \$217,148:** Freeman's maple (red x silver) potential for syrup production and resilience in Ohio's forests, Agricultural Marketing Service

**Jonathan Jacobs – Plant Pathology, \$145,339:** A systems approach for managing bacterial blight of carrot, Oregon State Univ

**Kelly Tilmon – ENT, \$50,000:** Management of soybean insects pest FY 21, Ohio Soybean Council

**Jason Parker – SENR, \$499,928:** Defining and overcoming economic factors hindering adoption of food safety practices by small and medium sized farms in the New England region, National Institute of Food & Agriculture

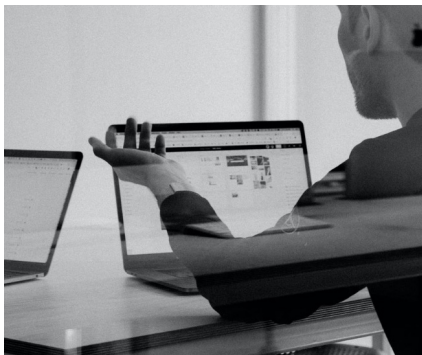
---

## New & Newsworthy

### Graduate Student Engagement Fund

CGS announces funding to help support grad student wellbeing and campus integration during the COVID-19 pandemic

[Learn More](#)



### Research Misconduct Policy Feedback

The Office of Research welcomes your feedback on revisions to the Research Misconduct policy

[Learn More](#)

# NIFA Invests \$3.8 M in Rural Health and Safety Education Grants

NIFA recently awarded **10 Rural Health and Safety Education grants**. NIFA's **RHSE program** projects are community-based outreach education programs, such as those conducted through human science extension outreach, that provide individuals and families with: information as to the value of good health at any age; information to increase individual or family's motivation to take more responsibility for their own health; information regarding rural environmental health issues that directly impact human health; information about and access to health promotion and educational activities; and training for volunteers and health services providers concerning health promotion and health care services for individuals and families in cooperation with state, local, and community partners. A faculty member in OSU Extension was a recipient of one of these awards! Congratulations Ken Martin, Professor, OSU Extension.

## Science Communication Scholarship

A Knowledge Exchange scholarship called Knowledge Expressed is looking for students to develop science communication products around one of the Grand Challenges (water quality, rural-urban interface, farm and community stress, food security and food waste) of the College of Food, Agricultural and Environmental Sciences. All students may submit ideas. Deadline is Nov. 22 at 11:59 p.m.

[View Opportunity](#)

## Upcoming Events

**November 12**  
3:00–4:30 p.m.

### Unapologetic Research Series

How making research emancipatory and transparent can chisel away at structural oppression

**November 17**  
1:00–2:30 p.m.

### CRE 101: The Basics Webinar

Learn what industry partners value from their relationship with academia and how academia benefits from engaging in collaborative industry- sponsored research.

**November 17**  
1:30–3:00 p.m.

### Cost-Sharing on Sponsored Programs

Review of how to budget cost-sharing in proposals, gain approval from the department and college, and book cost-sharing after an award is made



THE OHIO STATE UNIVERSITY

Research & Graduate Ed.



The Ohio State University



© 2020 | The Office for Research & Graduate Education  
gdsu@osu.edu  
research.cfaes.ohio-state.edu