



# Research News

December, 2021

## Funding Opportunities

As funding opportunities are announced we will compile a full list of opportunities on our website. The web page will be updated periodically as new opportunities are discovered.

### Partnerships for Innovation (PFI)

PFI offers researchers from all disciplines of science and engineering funded by NSF the opportunity to perform translational research and technology development, catalyze partnerships and accelerate the transition of discoveries from the laboratory to the marketplace for societal benefit.

**Deadline: January 12, 2021**

### (CIGLR) – Summits & Working Groups

Funding is available to support summits, 2-3 day meetings of 20-30 experts that summarize the state of knowledge and recommend future research priorities on problems in the Great Lakes, and working groups, smaller groups meeting for up to one week to make progress on more narrow Great Lakes issues.

**Deadline: January 14, 2021**

[View All Funding Opportunities](#)



Dr. Eric Stockinger, HCS

## Inside the Issue

- DC Days applications are due on January 10, 2022. - [Apply Now!](#)
- CFAES R&GE has released the fiscal year 2021 Research in Review Infographic
- NSF Research.gov Proposal Submission System Enhancements
- The 2022 R&GE Seminar Series schedule of events is now available
- Applications now open for the OSU Research Internship Program (ORIP)

---

# D.C. Days 2022 - Applications Due on January 10, 2022

---



The Office for Research and Graduate Education (R&GE) is pleased to announce we will once again be offering an opportunity for College of Food, Agricultural, and Environmental Sciences (CFAES) faculty to visit federal funding agencies in May 2022. The D.C. Days program encourages researchers to become more competitive by providing an opportunity to visit with federal program officers. This allows researchers to determine if a basic research concept matches the sponsor’s mission, seek advice concerning project design and appropriate funding track, and better understand the peer review process. Meetings with program agencies will take place in Washington, D.C. Approximately ten individuals will be chosen through a competitive application process to attend the three-day trip, which will take place from May 8-11, 2022. We will arrange for group visits at selected agencies on day one and the first half of day two. We encourage you to schedule individual appointments with specific program officers of your choosing for the remainder of day two and on day three.

Overall, 33 faculty members have attended this amazing opportunity since 2014. Of the faculty that attended in 2019, **100%** would recommend junior faculty participate in this experience. For past trip recaps, pictures, and comments, please visit: [research.cfaes.ohio-state.edu/resources/dc-days](https://research.cfaes.ohio-state.edu/resources/dc-days).

Application details are in the attached document. Pam Schlegel ([Schlegel.33@osu.edu](mailto:schlegel.33@osu.edu)) serves as the point of contact for questions. **Applications are due January 10, 2022.** We look forward to providing this exciting opportunity in 2022!

[Apply Now](#)



---

## Spotlight

### Workday Grants Update - Funding Timeout Issue Resolved

The timeout issue with the Faculty Financials/Other Funding Reports within the Grants Administration and Principal Investigator (PI) Dashboards has been resolved. This article is available via Newslink online.

[Read More](#)

### Principal Investigator Reporting Office Hours

Join us on 12/9 at 10 a.m. to learn how PIs can better manage grants in Workday. We’ll walk through how to use a helpful summary of reports to harness Workday’s real-time data. Registration is not required.

[Join Now](#)

### Workday Grants Update - Research Reporting Office Hours

Grants Administrators and Fiscal staff are encouraged to attend Research Reporting Office Hours session on 12/7 at 11 a.m. The agenda will include a demonstration of using Workday reports.

[Join Now](#)

# New & Newsworthy



## Workday Grant Update: Award Close-out Progress

Award lines are being closed-out and final reporting to sponsors completed, but the accounting workflow for residual balance transfers is delayed. More information will follow as soon as possible. Overruns continue to be processed as part of close-out.

[View All IT News](#)

## PLOS All-In Unlimited Publishing Agreement

University Libraries and Health Sciences Library Announce PLOS All-In Unlimited Publishing Agreement. The Ohio State University Libraries and the Health Sciences Library have entered into a three-year Unlimited Publishing Agreement with the [Public Library of Science](#) (PLOS), the [Center for Research Libraries](#) (CRL) and the [NorthEast Research Libraries](#) (NERL) to provide uncapped, no-fee publishing in all PLOS journals for Ohio State corresponding authors.

[Learn More](#)

## Research Development and Grant Writing News

We invite you to access the current issue of Research Development and Grant Writing News. The Office of Knowledge Enterprise | Research Development Office provides access to this subscription-based newsletter for the entire campus community.

- New Funding Directions at the Department of Energy
- Advice & Resources for the NSF MRI Proposal
- New Funding Directions at NOAA
- Editing the Proposal Introduction: The What, Why, How and So-What of a Preliminary Review

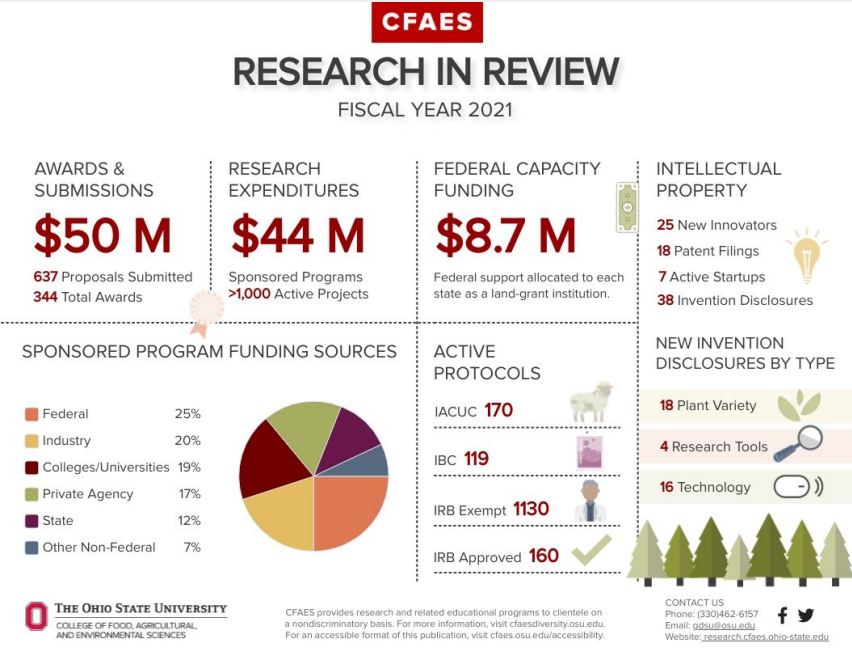
[Read Now](#)

## CFAES FY21 Research in Review Infographic

The CFAES Office for Research and Graduate Education has released the fiscal year 2021 Research in Review Infographic. The Research in Review highlights CFAES research expenditures, submissions, awards, and projects taking place over the course of the past fiscal year.

The infographic has been released annually since 2017 as a summation of the accomplishments of the researchers working in our college. Questions regarding any data listed in the infographic can be directed to Lori [Kaser.37](#).

[View Full Infographic](#)



## SCRI Pre-Application Now Available

The USDA Specialty Crop Research Initiative (SCRI) was established to solve critical industry issues through research and extension activities. SCRI will give priority to projects that are multistate, multi-institutional, or trans-disciplinary; and include explicit mechanisms to communicate results to producers and the public. Projects must address at least one of five focus areas below. Pre – App Deadline: 1/21/22.

- i. research in plant breeding, genetics, and genomics to improve crop characteristics;
- ii. efforts to identify and address threats from pests and diseases, including threats to specialty crop pollinators;
- iii. efforts to improve production efficiency, productivity, and profitability over the long term;
- iv. new innovations and technology, including improved mechanization and technologies that delay or inhibit ripening;
- v. methods to prevent, detect, monitor, control, and respond to potential food safety hazards in the production and processing of specialty crops including fresh produce.

GDSU can assist you with the proposal process, from pre-application to full submission. Note that our services are offered on a first come, first served basis and we assist all CFAES faculty and staff with proposal development. Because of this, we strongly recommend submitting your [Request Form](#) early!

[Learn More](#)

## F & A Waiver Requests

Several years back we implemented a policy for college level approval for a waiver of some or all Facility and Administration (F&A) cost recovery on grant submission. Compliance was good initially, but we have noticed an increase in issues recently, as outlined below.

- Prior approval not obtained from the Office of Research and Graduate Education for a reduction or elimination of F&A cost recovery.
- Proposals have been submitted to the sponsor without the submission of a formal waiver request, the epa-005 is completed after the fact, leaving no time for an appropriate review of the reduced F&A rate being proposed.
- Recently there have been numerous requests for a reduction of F&A to meet a match requirement utilizing unrecovered F&A versus first pursuing other sources of match other than release time. Unrecovered F&A should be close to the last resort for meeting match requirements.
- Department level approval for a reduction in F&A have been offered to faculty without seeking prior college approval.
- A misperception among a number of faculty that that a reduced F&A rate, universally across sponsors, makes their proposal more competitive. This is simply not true, especially for submissions to funding agencies or programs that allow F&A to be recovered.

As a reminder, individual faculty members and the department school do not have the authority to waive F&A. A waiver must be requested and approved in advance of the completion of the epa-005 and submission of the proposal.

F&A recovery reflects the true cost of conducting projects at Ohio State including infrastructure, IT, utilities, and other costs that generally cannot be charged directly to a grant. The F&A rates used by Ohio State are competitive with comparable universities, and much lower than the elite, private universities.

[View Waiver](#)

---

# Recent Awards

**Nathan Arnett – Extension**, \$203,228; Adventure Central, Five Rivers MetroParks

**Anne Dorrance, Feng Qu – Plant Path, Leah McHale – HCS, \$718,635**; Developing the perfect molecular markers and new germplasm for rapid incorporation of resistance to soil borne pathogens in soybean, Smith Bucklin

**Gireesh Rajashekara, Loic Deblais – CFAH, Sally Miller – Plant Path, \$108,205**; FSMA water standard for surface irrigation water in tomato production using high tunnel drip-line systems, Ohio Dept. of Agriculture

## NSF Research.gov Proposal Submission System Enhancements

- Preliminary proposals and full proposals related to a preliminary proposal are now supported in Research.gov. The program solicitation will clearly state whether Research.gov is available for submission.
- Program solicitations that permit a Project Description to exceed 15 pages are now supported in Research.gov. Proposers must follow the Project Description page limit requirements in the program solicitation. Proposers also should be aware that page limit requirements in a solicitation may vary by track or program. For a program solicitation that does not include Project Description page limit instructions, follow the guidance in the [Proposal & Award Policies & Procedures Guide](#) (PAPPG) (NSF 22-1).
- Center and Research Infrastructure proposal types are also now available for submission in Research.gov.
- New automated compliance checks and associated error and warning messages for the newly enabled proposal and submission types were also implemented. Error messages will prohibit proposal submission to NSF, whereas warning messages still permit proposal submission. Visit the [Automated Compliance Checking of NSF Proposals](#) page to view the current compliance checks for Research.gov proposals.
- All supported proposal and submission types and the associated compliance checks are also in the Research.gov Proposal Preparation Demo Site. See the demo site frequently asked questions (FAQs) on the Research.gov [About Proposal Preparation and Submission](#) page for information on demo site access and features.
- New FAQs were added to the Research.gov [About Proposal Preparation and Submission](#) page for the above-referenced enhancements, and the [Proposal Submission Capabilities](#) page has been updated to reflect the latest development updates.
- NSF is transitioning all proposal preparation and submission from FastLane to Research.gov by a target date of **December 31, 2022**. NSF funding opportunities are being enabled in Research.gov as new functionality is added, and FastLane will continue to be incrementally removed from funding opportunities as a submission option through December 31, 2022. We invite you to join our System Updates listserv to stay updated on the transition by sending a blank email to [system\\_updates-subscribe-request@listserv.nsf.gov](mailto:system_updates-subscribe-request@listserv.nsf.gov).

HAPPY HOLIDAYS TO YOU AND  
YOURS FROM CFAES R&GE!

### R&GE Seminar Series 2021-2022

The R&GE Seminar Series provides educational opportunities every month during the academic year. The 2022 schedule of events is now available. Topics include budgeting basics, finding and managing international funding opportunities, technology commercialization, and many others.

As we offer new opportunities, check back to view recorded sessions, PowerPoint presentations, and handouts. If you have questions, comments, or ideas for a new session, please contact [Alexis Didingier](#).

[View the Complete Schedule](#)

DECEMBER 2021 - APRIL 2022

CFAES

R&GE Seminar Series



VIEW THE COMPLETE SCHEDULE

# OSU Research Internship Program on the Wooster Campus (ORIP) Applications Open

The 2022 OSU Research Internship Program (ORIP) on the Wooster campus is currently accepting student and faculty mentor applications. The program is managed centrally through the CFAES Office for Research and Graduate Education, and coordinated by Faculty Advisor, Michelle Jones, Professor (HCS). This year's program will run from May 9, 2022 to July 18, 2022.

Student Applications Due: February 28, 2022  
Faculty Mentor Applications Due: February 4, 2022

The ORIP program is targeted to provide research experiences for high school students and undergraduates. Students must be 18 years of age by May 1st to participate. The goal of this program is to expand research opportunities to area students and to enhance their interest in science, technology, engineering, and mathematics by inculcating critical thinking skills through rigorous laboratory and field-based research experiences, seminars, group discussions, and symposia. The program opens the doors of the state-of-the-art laboratories at OARDC to young students in the community to explore various scientific career paths.

All selected students will receive stipends and certificates indicating their participation in the program. The students will also build a network of peers, scientists, and experiences that will set them apart from others for college applications and future career opportunities. Please direct questions to Alexis [Didinger.2@osu.edu](mailto:Didinger.2@osu.edu).



[Apply Now](#)

## Events & Opportunities

December 8

1:00-2:00 PM

### Supporting the Mental Health and Well-being of Postdocs

Learn about challenges faced by postdocs & strategies/resources that institutions can use to address them

[Register](#)

December 14

12:00-1:00 PM

### R&GE Seminar Series: Research Data Management

Learn the basics of research data management and recommendations about RDM tools & resources

[Register](#)

January 11

12:00-1:00 PM

### R&GE Seminar Series: Budgeting Basics

Get an overview of the expenses most commonly requested in grant applications

[Register](#)



**THE OHIO STATE UNIVERSITY**  
COLLEGE OF FOOD, AGRICULTURAL,  
AND ENVIRONMENTAL SCIENCES

© 2021 | Office for Research & Graduate Education  
[gdsu@osu.edu](mailto:gdsu@osu.edu)  
[research.cfaes.ohio-state.edu](http://research.cfaes.ohio-state.edu)

Research & Graduate Ed.



The Ohio State University

