



# Research News

April, 2022

## Funding Opportunities

As funding opportunities are announced we will compile a full list of opportunities on our website. The web page will be updated periodically as new opportunities are discovered.

### Partnerships for Innovation (PFI)

PFI offers researchers from all disciplines of science and engineering funded by NSF the opportunity to perform translational research and technology development, catalyze partnerships and accelerate the transition of discoveries from the laboratory to the marketplace for societal benefit.

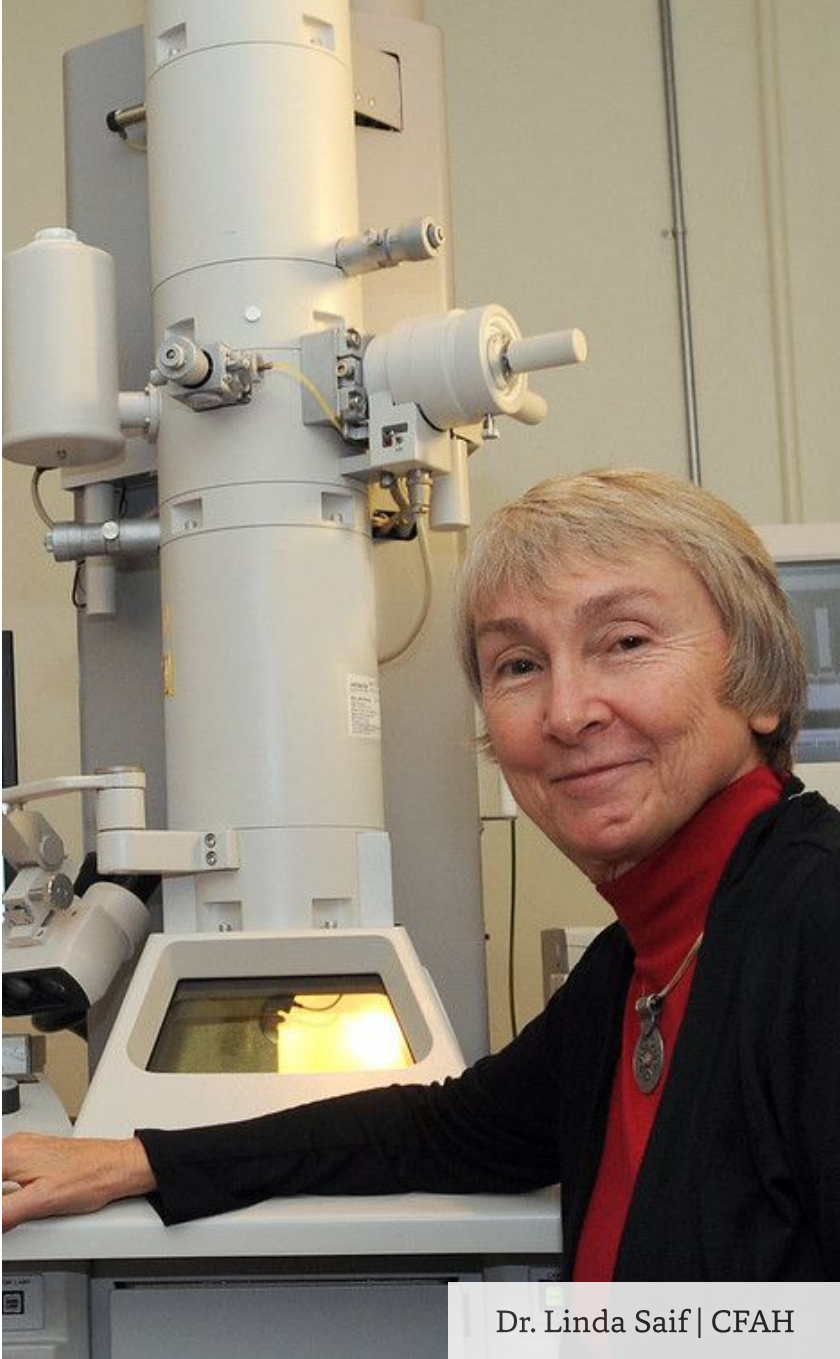
**Deadline: July 13, 2021**

### New Challenges on Challenge.Gov

The prize competitions keep coming on Challenge.Gov! Fifteen prize competitions were launched by five federal agencies. Three of the competitions offer non-monetary awards, while 12 competitions are offering a combined total prize purse of over \$6 million.

**Deadline: Coming Soon**

[View All Funding Opportunities](#)



Dr. Linda Saif | CFAH

## Inside the Issue

— This past month we wrapped up the Office for Research & Graduate Education Strategic Alignment for Research Success (STARS) program for the first cohort of 12.

— CFAES R&GE is pleased to announce the 2022 Annual Celebration of Research Week, which will be held from April 11-15, 2022, in coordination with the CFAES Annual Research Conference.

— Are you excited by a research idea, discovery or insight that could have an impact on the world? If so, please let the Technology Commercialization Office (TCO) know!

— Please plan to virtually join the Enterprise for Research, Innovation and Knowledge for the Research and Innovation Showcase on Wednesday, April 13, from noon to 1:15 p.m.

---

# CFAES STARS Program Wraps for Inaugural Year

*Gary Pierzynski, Associate Dean for Research & Graduate Education*

---



This past month we wrapped up the Strategic Alignment for Research Success (STARS) program for the first cohort of 12. Congratulations to Marilia Chiavegato, Jessica Cooperstone, Suzanne Gray, Andrea Gschwend, Jonathan Fresnedo Ramirez, Emmanuel Hatzakis, Shoshanah Inwood, Zoe Plakias, Alejandro Relling, Mary Rodriquez, Joy Rumble, and Christopher Simons for a job well done. The overall goals of the program are to foster a strategic approach to the direction of one’s faculty career with an emphasis on building a resume with smaller grants and local awards working toward being competitive for large grants, centers, and international recognition. Being strategic involves, in part, pushing the “pause button” on the busyness of our everyday lives to ensure that some of our time is spent identifying and working toward important career goals. To borrow from Steven Covey’s “Seven Habits of Highly Effective People”, we need to spend more time doing things that do not appear to be urgent today but are very important in the long run, which is important advice for all of us.

The STARS program consists of two phases complemented by additional features to provide an experience that fosters identifying significant goals and providing the tools needed to achieve them. The first phase utilized an external consultant, The AtKisson Training Group, that presented principles used by entrepreneurs and small business owners as applicable to academia. The second phase utilized campus leaders and covered a variety of topics including ethics, creative ways to fund your research, and grant management. The additional features included mentorship, a series of coffee and convergence sessions covering a wide range of relevant topics, and the preparation and presentation of a research action plan. After listening to the research action plan presentations, I have great confidence in the future of CFAES research! Soon we will be recruiting for a second cohort. Please reach out to me, the GDSU staff, or members of the first cohort if you want more information. Nominations will first be solicited from department chairs, so make your department chair aware if you are interested.



[Learn More](#)

---

## Spotlight

### Fulbright Week at Ohio State April 4-8, 2022

Join the Office of International Affairs and the Undergraduate Fellowship Office for a full week of activities to promote the prestigious Fulbright and Fulbright-Hays programs. Visit the website for a list of events for graduate & professionals at OSU.

[View Events](#)

### Developing Emerging Leaders & Talent in Ag.

Corteva Agriscience invites under-represented minority undergrad/grad students & pdocs to register for a program called DELTA, offering candidates an opportunity to participate in a symposium & to secure a research grant or scholarship.

[Learn More](#)

### The Role of Research at Universities

Why are universities engaged in the conduct of research? Who pays? Who benefits? Why does it all matter? Let’s get to some answers, because the academic research enterprise really isn’t that difficult to explain, and its impacts are profound.

[Read More](#)



---

# New & Newsworthy



## TCO wants to hear your ideas!

Are you excited by a research idea, discovery or insight that could have an impact on the world? If so, please let the Technology Commercialization Office (TCO) know by emailing a brief description of your idea or discovery. A technology commercialization professional will contact you and help you navigate the commercialization process.

[Learn More](#)

### AFRI Foundational and Applied Science Program

This program supports priority areas to advance knowledge in fundamental and applied sciences important to ag. The program areas include: plant health and production, and plant products; animal health and production, and animal products; food safety, nutrition, and health; bioenergy, natural resources, and environment; agriculture systems and technology; and agriculture economics and rural communities. Application deadline: 12/31/22.

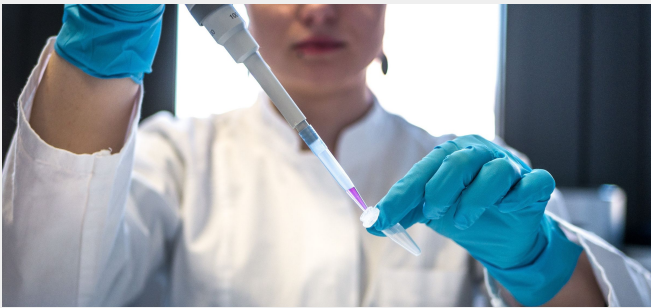
[Read More](#)



### AFRI Sustainable Agricultural Systems

AFIR SAS supports approaches that promote transformational changes in the U.S. food and agriculture system. NIFA seeks creative and visionary applications that take a systems approach for projects expected to significantly improve the supply of affordable, safe, nutritious, and accessible agricultural products while fostering economic development and rural prosperity in America. Letter of Intent Deadline: 4/27/22.

[Read More](#)



### Central Cost Share Request Process

Managed by the Office of Knowledge Enterprise, the Enterprise for Research, Innovation and Knowledge (ERIK) has implemented a process for central university cost share requests for Sponsored Research Proposals to increase transparency and provide a standard experience across colleges.

Cost sharing is the contribution of quantifiable financial and non-financial support to a sponsored project. It is generally the responsibility of the units proposing the project; however, there are times when commitment of a quantifiable resource from the central university is required or necessary to meet a sponsor’s specific requirements.

For questions about the central cost share request process, contact Laurie Neer, Office of Knowledge Enterprise Operations Manager ([neer.57@osu.edu](mailto:neer.57@osu.edu) or 614-292-8170).

[Read More](#)

Internal procedures for limited competitions

Review Ohio State’s internal procedures for handling limited competitions (Ohio State name.# login required). Key reminders include:

The Research Development Office posts and manages limited competition opportunities on the University’s Limited Competition Portal and manages a selection process (Ohio State name.# login required).

Prospective Principal Investigators should notify their Sponsored Programs Officer (SPO) immediately upon identification of a limited opportunity of interest.

If opportunity is within six weeks of a submission deadline, limited submission applicants are designated on a first-come, first-served basis tied to SPO notification to the Research Development Office.

If opportunity is prior to six-week submission deadline, the Research Development Office posts the opportunity on the University’s Limited Competition Portal and manages the selection process.



CFAES

2022 Annual

CELEBRATION OF RESEARCH WEEK

April 11-15, 2022 | Virtual

VIEW AGENDA

View Portal | Review Now

View Agenda

The CFAES Office for Research & Graduate Education is pleased to announce the 2022 Annual Celebration of Research Week, which will be held from April 11-15, 2022, in coordination with the CFAES Annual Research Conference.

The 2022 Annual Celebration of Research Week will provide an opportunity to emphasize the many successes of the research community in the College of Food, Agricultural, and Environmental Sciences. Throughout the week we will be highlighting the inaugural CFAES STARS cohort and their research via [Facebook](#) and [Twitter](#), so if you have not already done so, please take a moment to follow us. We will also be hosting several events including:

- **The 2022 Poster Competition:** Attend live, in-person poster sessions taking place on Monday (in Wooster and Columbus) and Tuesday (in Columbus only), allowing poster authors an opportunity to share their research with a live audience. [Learn More](#)
- **Virtual Visits with NIH and NSF** to give our researchers the chance to become more competitive by providing an opportunity to visit with federal program officers. This enables researchers to determine whether their basic concept is a good fit with the sponsor's mission, to seek advice concerning project design and appropriate funding track, and to better understand the peer review process. [Visit with NIH](#) | [Visit with NSF](#)
- **The Annual Research Conference Awards Ceremony** will showcase several CFAES researchers who have been awarded for making outstanding contributions in their respective areas. Dr. Pierzynski will also share remarks on the CFAES Research Enterprise. [Register](#)

## Time & Effort Certification, OSP Grants

Spring term sponsored program effort certifications have been initiated in Workday to all monthly employees working on or supervising those who provided effort on sponsored programs January – May 2021.

Certifying effort is a federal requirement that ensures a certain level of personnel time was delivered on grant objectives as offered at the proposal level. Federal guidelines are to certify or amend effort certifications within 90 days of occurrence.

For more information on effort certification and directions for accessing reports in Workday see <https://osp.osu.edu/resources/etools/e-cert/>  
The Workday team has also put together an instructional video which can be accessed at <https://admin.resources.osu.edu/workday/workday-for-employees/effort-certification-0>.

[View Resources](#) | [Access Video](#)

## CFAES Sponsored Program Officers

Curious about who to contact in the Office of Sponsored Programs? Check out our list of SPOs, their areas of expertise, and their contact info.

| Name.#                     | Department/Unit   |
|----------------------------|---|
| Stephanie Harrier.4        | AS, CFAH, ENT, ACEL, PP                                   |
| Zoe Legato.2               | FST, HCS, AEDE, ATI                                       |
| Ginette Busque.1           | SENR, South Centers, Admin, Center for Lake Erie Research |
| Cheryl Sowash.10 (Interim) | OSU Extension   |
| Michael Volkman.9          | FABE  |
| Michael Adkins.121         | Industry SPO for FST &FABE                                |
| Kelsey Sigrist.22          | Industry SPO for all other CFAES departments              |

[View Website](#)

# Recent Awards

- Aradhya Gourapura, Gireesh Rajashekara – CFAH, \$625,100;** Drinking water deliverable chitosan based salmonella and campylobacter subunit vaccine for broilers, National Institute of Food and Agriculture
- Melanie Ivey, Sally Miller, Pierce Paul – Plant Path, \$942,756;** Deciphering the environmental sources and genetic basis of antifungal resistant Aspergillus fumigatus, National Institute of Food and Agriculture
- Michelle Jones – HCS, \$649,982;** Plant growth promoting rhizobacteria: a sustainable technology to manage fertilizer use efficiency in controlled environment agriculture, National Institute of Food and Agriculture
- Audrey Dimmerling – OSU Extension – Columbiana County, \$12,350;** CCDJFS 2022 respite day camp, Columbiana County Department of Job and Family Services
- Reed Johnson – ENT, \$36,250;** Understanding risks and potential benefits of spray adjuvants for honeybees, The National Honey Board and Project Apis m.
- Christopher Tonra – SENR, \$84,225;** Assessing the risk to migratory birds of offshore wind on Lake Erie: Prevalence and spatial distribution of lake-crossing behavior, US Fish and Wildlife Service
- Mary Anne Rose – OSU Extension – ANR, \$18,750;** Glyphosate presentation, eXtension

## Register Now for Upcoming R&GE Seminar Series Sessions

The R&GE Seminar Series provides educational opportunities every month during the academic year. We do want to remind all of you that we still have one remaining session in the 2022 Seminar Series being held in April. If you have questions, comments, or ideas for next season, please contact Alexis Didingr.2.

[Industry Sponsored Research](#) - 4/12/22 | 12-1

[Learn More](#)

## Celebrate Ohio State’s Researchers and Innovators on April 13

When seekers, creators, visionaries and scholars connect refusing to yield to those who say it can’t be done, a better, more hopeful and vibrant future emerges. The Research and Innovation Showcase celebrates those unsatisfied with the status quo and inspires more to wonder, inquire and discover new knowledge. Please plan to virtually join the Enterprise for Research, Innovation and Knowledge for this annual event on Wednesday, April 13, from noon to 1:15 p.m. The showcase is a catalyst for potential partnerships, empowering research, innovation and the entrepreneurial spirit to thrive. Learn more or RSVP to receive viewing instructions sent to your email prior to the event.

[Learn More](#) | [RSVP](#)

# Events & Opportunities

| April 12<br>12:00-1:00 PM   | April 26<br>9:00-10:30 AM  | May 17<br>1:00-2:30 PM  |
|---|--|---|
| <div>R&amp;GE Seminar Series: Industry Sponsored Research</div> <div>Helpful tips on talking with Industry partners, and when/how to incorporate OSP, TCO, and CEO.</div> <div>Register</div> | <div>Intro to National Security and Foreign Influence in Research</div> <div>Learn about the Office of Secure Research and its role in international research collabs and engagement</div> <div>Register</div> | <div>Intro to the Office of Innovation and Economic Development</div> <div>OIED leaders will introduce their office and the issues for which they are responsible</div> <div>Register</div> |