

# Food, Agricultural, and Biological Engineering Research FY 2020

## AWARDS & SUBMISSIONS

# \$3.5 M

64 Awards Valued at \$3.5 M

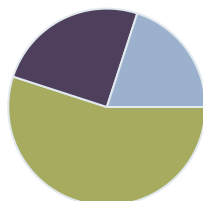
84 Proposals Submitted



## GRANT EXPENDITURES

# \$4.6 M

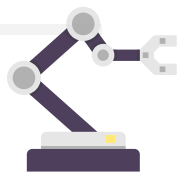
Funds spent on personnel, supplies, and services.



## ACTIVE PROJECTS

# 183

Sponsored programs



## TOP AWARDS

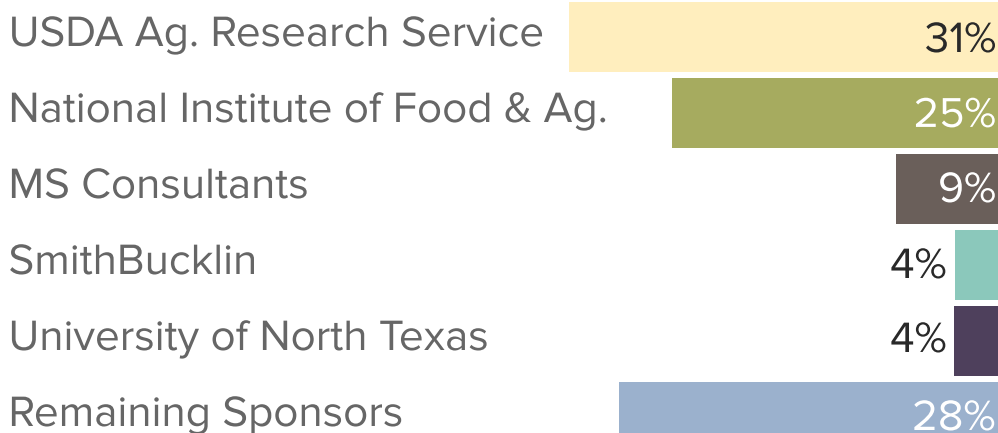
**RYAN WINSTON**

Assistant Professor, MS Consultants, **\$292,368**, Inlet protection comparison for sediment control on roadway construction.

**MARGARET KALCIC**

Assistant Professor, National Institute of Food & Agriculture (NIFA), **\$499,926**, Healthy soils, healthy waters: Will soil health improvements mitigate nutrient loading to the Great Lakes?

## TOP SPONSORS OF AWARDED GRANTS



## LEAN ON YOUR LAND-GRANT



As a land-grant institution, the College of Food, Agricultural, and Environmental Sciences supports the industry by conducting research, training the next generation of agricultural leaders, and engaging stakeholders via OSU Extension.

## 2020 DISTINGUISHED PROFESSOR OF FAES

**JUDIT PUSKAS**

For excellence in teaching, research, or outreach/engagement and work that has significantly impacted the field, students, the college, the university, or the public.

## GRADUATE STUDENT ENROLLMENT

# 62



**THE OHIO STATE UNIVERSITY**  
COLLEGE OF FOOD, AGRICULTURAL,  
AND ENVIRONMENTAL SCIENCES

CFAES provides research and related educational programs to clientele on a nondiscriminatory basis.  
For more information, visit [cfaesdiversity.osu.edu](http://cfaesdiversity.osu.edu).  
For an accessible format of this publication, visit [cfaes.osu.edu/accessibility](http://cfaes.osu.edu/accessibility).

CONTACT US  
Phone: (330)462-6157  
Email: [gdsu@osu.edu](mailto:gdsu@osu.edu)  
Website: [research.cfaes.ohio-state.edu](http://research.cfaes.ohio-state.edu)

